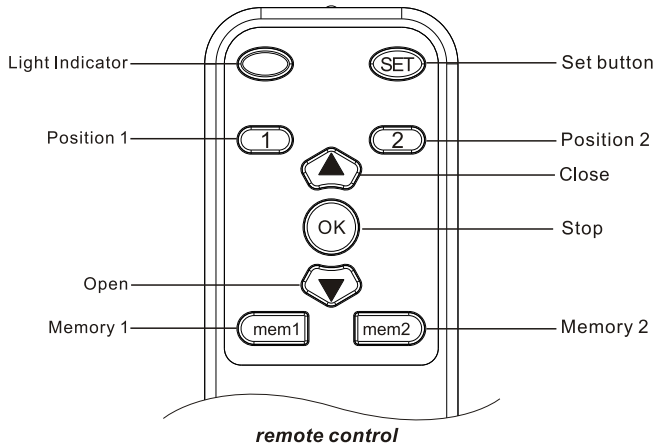
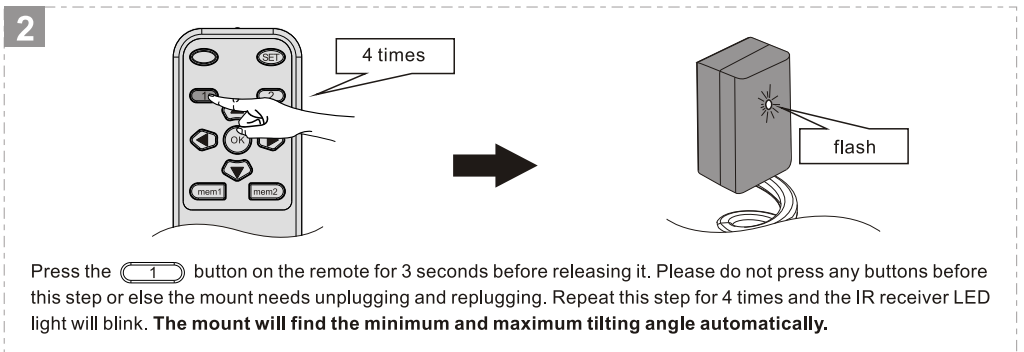
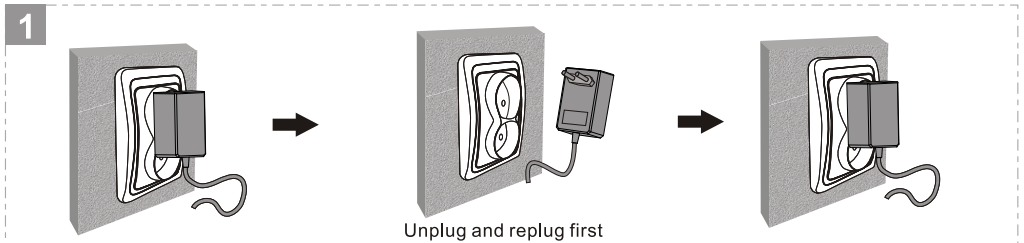


Factory Reset instruction



remote control



Press the **1** button on the remote for 3 seconds before releasing it. Please do not press any buttons before this step or else the mount needs unplugging and replugging. Repeat this step for 4 times and the IR receiver LED light will blink. **The mount will find the minimum and maximum tilting angle automatically.**



Please keep the power on during the resetting.